



Mini Clay

Marc Krusin · 2016

Forme geometriche ed equilibrio perfetto in diverse variazioni materiche e cromatiche. Anche in versione tavolino, resta un classico del design contemporaneo internazionale.



Modelli disponibili

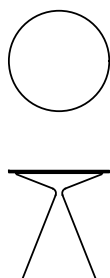
Tavolino smontabile con base in poliuretano rigido realizzato nelle finiture laccate o materiche spatolate a mano riportate a listino. Top in ceramica, MDF laccato o nelle finiture materiche spatolate a mano. Disponibile nelle versioni indoor e outdoor.



Mini Clay

altezza
45 cm

misure
Ø 50 cm
Ø 60 cm
Ø 75 cm



Mini Clay

altezza
55 cm

misure
Ø 50 cm
Ø 60 cm
Ø 75 cm



Mini Clay

altezza
65 cm

misure
Ø 50 cm
Ø 60 cm
Ø 75 cm

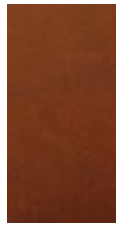
Finiture

Basamento

Spatolati Materici



A90 METAL
GREY



A91 METAL
RUSTY



A92 METAL
BRONZE



D64 PIETRA
TUFO



D65
CEMENTO
GRIGIO
LUNA



D66
CEMENTO
NERO



D67 PIETRA
LAVICA



D62 COURT
GREY



D63
BIANCO
DUOMO

Laccature



B42
GRAFITE



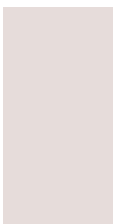
B62
BIANCO
OPACO



B71 GIALLO
BLAZING



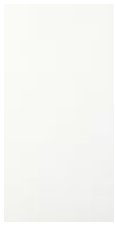
B72 BLU
DENIM



B73 ROSA
QUARZO

Top

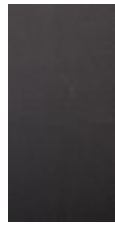
Ceramiche



D84
BIANCO
CALCE



D85
CEMENTO



D86
ASFALTO



D87 LAVA



D88
DESERTO

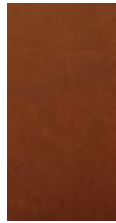


D89 GRIGIO
AMBER

Spatolati Materici



A90 METAL
GREY



A91 METAL
RUSTY



A92 METAL
BRONZE



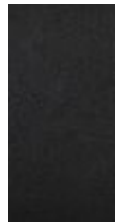
D64 PIETRA
TUFO



D65
CEMENTO
GRIGIO
LUNA



D66
CEMENTO
NERO



D67 PIETRA
LAVICA



D62 COURT
GREY



D63
BIANCO
DUOMO

Laccature



B42
GRAFITE



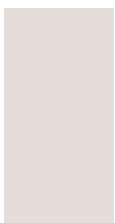
B62
BIANCO
OPACO



B71 GIALLO
BLAZING



B72 BLU
DENIM



B73 ROSA
QUARZO

