



Element

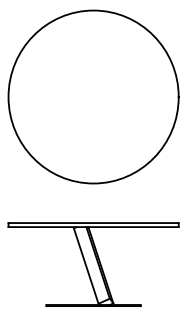
Tokujin Yoshioka · 2013

Tavolo icona, Element è emblema di purezza e poesia, sintesi della cifra progettuale del visionario designer Tokujin Yoshioka. Il sostegno centrale, in bilico tra i due elementi orizzontali, sfida la gravità, sospesa tra terra e cielo e tra passato e futuro.



Modelli disponibili

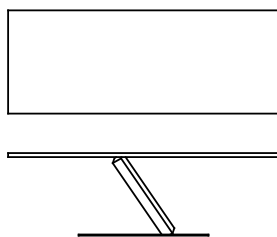
Tavolo smontabile con struttura in acciaio, piani in metallo o MDF, nelle finiture laccate o materiche spatolate a mano.



Element

altezza
72 cm

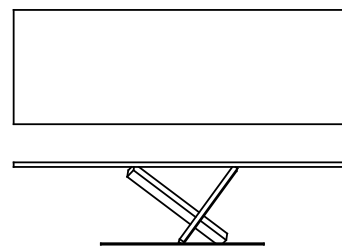
misure
Ø 140 cm
Ø 160 cm



Element

altezza
72 cm

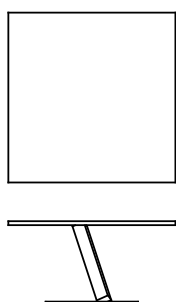
misure
200 x 99 cm
240 x 99 cm



Element

altezza
72 cm

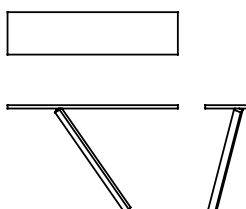
misure
300 x 99 cm



Element

altezza
72 cm

misure
148 x 148 cm



Element

altezza
95 cm

misure
38 x 130
38 x 150

Finiture

Basamento

Laccature



A66
LACCATO
FERRO
GREZZO



B59 NERO
OPACO

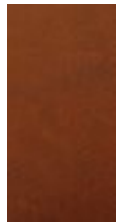


B62
BIANCO
OPACO

Spatolati Materici



A90 METAL
GREY



A91 METAL
RUSTY



A92 METAL
BRONZE



D65
CEMENTO
GRIGIO
LUNA



D66
CEMENTO
NERO



D62 COURT
GREY



D63
BIANCO
DUOMO

Top

Laccature



A66
LACCATO
FERRO
GREZZO



B59 NERO
OPACO

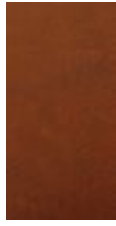


B62
BIANCO
OPACO

Spatolati Materici



A90 METAL
GREY



A91 METAL
RUSTY



A92 METAL
BRONZE



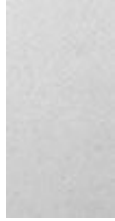
D65
CEMENTO
GRIGIO
LUNA



D66
CEMENTO
NERO



D62 COURT
GREY



D63
BIANCO
DUOMO

Cristalli



E18 BIANCO
OPACO

