



Mixit + Mixit Glass

Arik Levy · 2005 / 2007

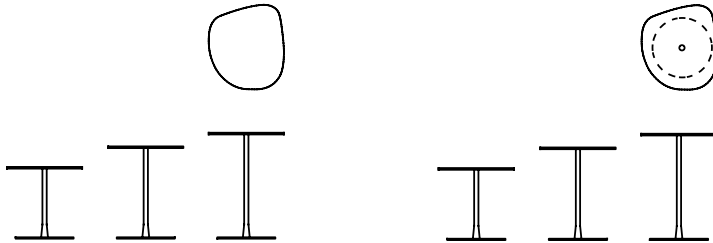
Low tables with simple, graceful shapes, with modern and original details enhanced by a powerful graphic presence and classic colours.



Available models

Mixit: Small table with layered or painted laminate top. Steel tube and base, painted in the same colour as the top. Available with ceramic tops mm 6 too, suitable also for outdoor.

Mixit Glass: Small table with tube and base of lacquered steel or with the exclusive Desalto's finishes. Toughened glass top mm 10.



Mixit

height
42 - 54 - 62 cm

measures
44 x 49 cm

Mixit glass

height
42 - 54 - 62 cm

measures
44 x 49 cm

Finishing

Structure - Mixit

Lacquers



B13
SABBIA



B22
MARRONE
BUNGEE



B41
TORTORA



B42
GRAFITE



B56
RUGGINE



B59 NERO
OPACO



B62
BIANCO
OPACO



B72 BLU
DENIM

Metals



A18
OSSIDIANA
OPACO



A03
CROMO

Top - Mixit

Ceramics



D84
BIANCO
CALCE



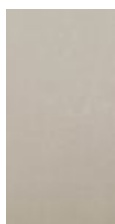
D85
CEMENTO



D86
ASFALTO



D87 LAVA



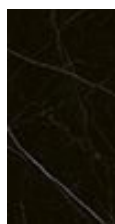
D88
DESERTO



D89 GRIGIO
AMBER



D90
BIANCO
STATUARIO



D91 NERO
MARQUINA

Lacquers



B22
MARRONE
BUNGEE



B71 GIALLO
BLAZING



B72 BLU
DENIM



B73 ROSA
QUARZO

Laminate

D34
STRATIFICATO
BIANCO



D35
STRATIFICATO
NERO

Top - Mixit Glass

Ceramics



D91 NERO
MARQUINA

Glass



E07 BLU
TRASPARENTE



E32
BRONZO



E65 GRIGIO
EUROPA



E71 EXTRA
CHIARO
TRASPARENTE

Structure - Mixit Glass

Lacquers



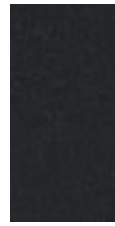
B13
SABBIA



B22
MARRONE
BUNGEE



B41
TORTORA



B42
GRAFITE



B56
RUGGINE



B59 NERO
OPACO



B62
BIANCO
OPACO



B72 BLU
DENIM

Metals



A18
OSSIDIANA
OPACO



A03
CROMO

