



## **Sand Light**

**Pocci + Dondoli · 2010**

Lightness is the style trait of Sand Light, light in its look and its weight thanks to a die-cast aluminium frame and a polyester mesh seat and backrest.

Sand Light embodies a successful combination of structural stability and understated elegance.



## Available models

Stacking chair with or without armrests, die-cast aluminium frame. Seat and back with mesh made of polyester thread covered in PVC (Sand Air) and PVC + hemp (Sand Air Canatex / Duo) in different colours. Lacquered versions also available for outdoor use.



### Sand light

width 48 cm  
depth 55 cm  
total height 81 cm  
seat height 47 cm

### Sand light with armrest

width 51 cm  
depth 55 cm  
total height 81 cm  
seat height 47 cm  
arm rest height 66,5 cm

## Finishing

### Structure

#### Lacquers



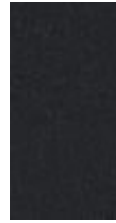
B13  
SABBIA



B22  
MARRONE  
BUNGEE



B41  
TORTORA



B42  
GRAFITE



B59 NERO  
OPACO



B62  
BIANCO  
OPACO

#### Metals



A18  
OSSIDIANA  
OPACO



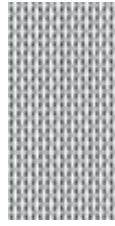
A03  
CROMO

### Seat

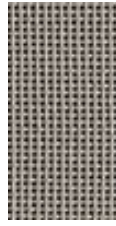
Net



S03  
BIANCO



S07  
MELANGE



S21  
CANATEX  
TORTORA



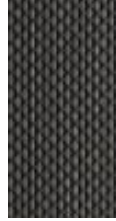
S22  
CANATEX  
SABBIA



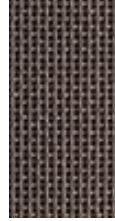
S24  
CANATEX  
NERO



S27 GRIGIO  
PIOMBO



S28 GRIGIO  
GHISA



S31  
CANATEX  
MARRONE  
SCURO



S01 NERO



S23  
CANATEX  
PAGLIA



S30  
CANATEX  
MARRONE  
MEDIO

