



Mini Clay

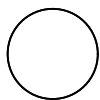
Marc Krusin · 2016

Forme geometriche ed equilibrio perfetto in diverse variazioni materiche e cromatiche. Anche in versione tavolino, resta un classico del design contemporaneo internazionale.



Modelli disponibili

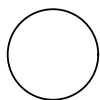
Tavolino smontabile con base in poliuretano rigido realizzato nelle finiture laccate o materiche spatolate a mano riportate a listino. Top in ceramica, MDF laccato o nelle finiture materiche spatolate a mano. Disponibile nelle versioni indoor e outdoor.



Mini Clay

altezza
45 cm

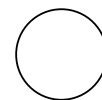
misure
Ø 50 cm
Ø 60 cm
Ø 75 cm



Mini Clay

altezza
55 cm

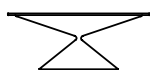
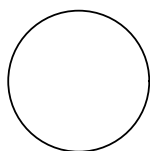
misure
Ø 50 cm
Ø 60 cm
Ø 75 cm



Mini Clay

altezza
65 cm

misure
Ø 50 cm
Ø 60 cm
Ø 75 cm



Mini Clay

altezza
35 cm

misure
Ø 90 cm
Ø 110 cm

Finiture

Basamento

Spatolati Materici



D55
CEMENTO
BLU REALE



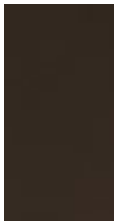
D56
CEMENTO
ARDESIA



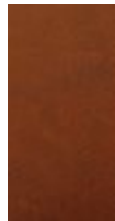
D57
CEMENTO
OCRA



D58
CEMENTO
GHIACCIO



D59
CEMENTO
CACAO



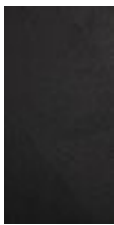
D60
CEMENTO
ROSSO
MATTONE



D61
CEMENTO
BIANCO



D65
CEMENTO
GRIGIO
LUNA



D66
CEMENTO
NERO



D62 COURT
GREY



D64 PIETRA
TUFO



D67 PIETRA
LAVICA

Laccature



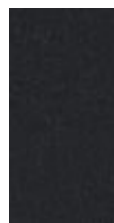
B13
SABBIA



B22
MARRONE
BUNGEE



B34 GRIGIO
CHIARO



B42
GRAFITE



B62
BIANCO
OPACO



B82 GRIGIO

Top

Spatolati Materici



D55
CEMENTO
BLU REALE



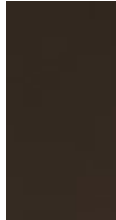
D56
CEMENTO
ARDESIA



D57
CEMENTO
OCRA



D58
CEMENTO
GHIACCIO



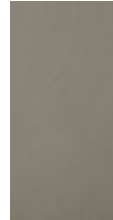
D59
CEMENTO
CACAO



D60
CEMENTO
ROSSO
MATTONE



D61
CEMENTO
BIANCO



D65
CEMENTO
GRIGIO
LUNA



D66
CEMENTO
NERO



D62 COURT
GREY



D64 PIETRA
TUFO



D67 PIETRA
LAVICA

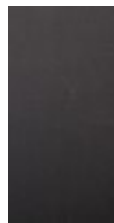
Ceramiche



D84
BIANCO
CALCE



D85
CEMENTO



D86
ASFALTO



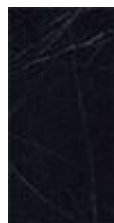
D87 LAVA



D89 GRIGIO
AMBER



D90
BIANCO
STATUARIO



D92 NERO
MARQUINA
LUCIDO



D93
SAHARA

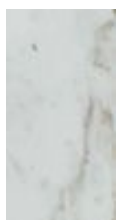


D94
INDUSTRIAL
WHITE

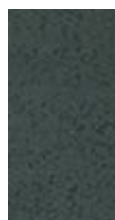


D95
INDUSTRIAL
GREY

Marmo



N03
CALACATTA
ORO



N04 ETNA
NATURAL
ROCK



N05
GRAFITE
GREY



N02
CARRARA

Laccature



B13
SABBIA



B22
MARRONE
BUNGEE



B42
GRAFITE



B62
BIANCO
OPACO