



Nara

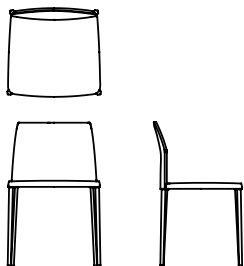
Piergiorgio Cazzaniga - 2014

Quattro esili gambe in alluminio sorreggono un ampio sedile ed uno schienale imbottiti completamente sfoderabili, capaci di dare, attraverso la loro forma, una sensazione di confort che invita a sedersi. Questo è il progetto di sedia immaginato da Piergiorgio Cazzaniga.



Modelli disponibili

Sedia imbottita in tessuto sfoderabile, pelle o ecopelle. Scocca in poliuretano flessibile con cinghie elastiche inserite nella seduta. Gambe in pressofusione di alluminio.



Nara

larghezza 50 cm
profondità 51 cm
altezza totale 78 cm
altezza seduta 46,5 cm

Finiture

Struttura

Laccature



B42
GRAFITE



B59 NERO
OPACO

Metalli



A27
TITANIUM



A18
OSSIDIANA
OPACO

Rivestimento

Pelle



M50
BIANCO



M52 TESTA
DI MORO



M53 NERO



M55 ROSSO



M58
BORDEAUX



M59
SABBIA



M61 PANNA



M69
ZAFFERANO

Pelle - NUVOLA



M73 NEVE



M74 BRUNO



M75 OASI



M76
TABACCO



M77 NERO



M78
CAMELIA



M79 KAKI



M80
BORDEAUX

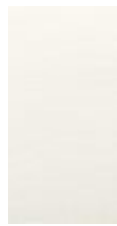


M81
ANTRACITE

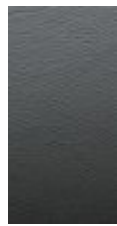
Eco pelle



R16 CAFFÈ



R02
BIANCO



R06
ANTRACITE



R07 ECRU



R18 ROSSO



R19
AMARANTO



R29 NERO

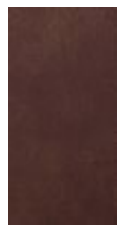
Ecopelle - GRAIN



R40
COGNAC



R41 FUMO



R42
TABACCO



R43
ARDESIA



R44
CARBONE



R45
SAHARA

Ecopelle - GLOVE



R46 LATTE



R48 PIETRA



R49 PELTRO



R51 BISTRO



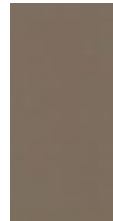
R52 MORO



R53 BRUNO



R54 CUIOIO



R55
CANNELLA



R56 OLIO



R57
GRANATA

Tess. DANDY (Cat. A)



H65 CORDA



H66 ECRU



H67
TORTORA



H68
MELOGRANO



H69 TORBA



H70
PAGLIERINO



H71 GIADA



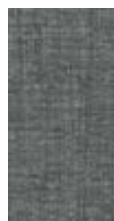
H72
TURCHESE



H73 DENIM



H74
ANTRACITE



H75 FUMO

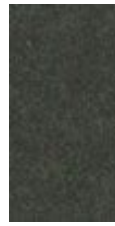


H76 FANGO

Tess. LODEN (Cat. A)



H77 IUTA



H78 MOCA



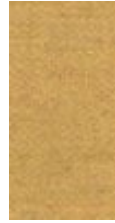
H79 PECE



H80
GRANITO



H81 BRINA



H82
BANANA



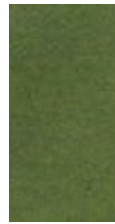
H83
ARAGOSTA



H84
VERMIGLIO



H85 BOSCO



H86
PISTACCHIO



H87 CIANO



H88
INCHIOSTRO

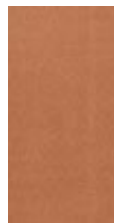
Tess. SOFTY (Cat B)



H27 GESSO



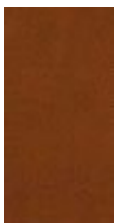
H28 CIPRIA



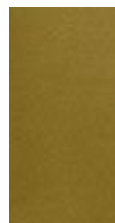
H29
MARSALA



H36
PAPAYA



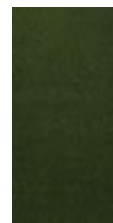
H37
NOCCIOLA



H38 CEDRO



H39
CILIEGIA



H46
MUSCHIO



H47
PAVONE



H48
OCEANO



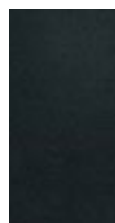
H49 VISIONE



H51 CAFFÈ



H52 TITANIO



H53
ARDESIA

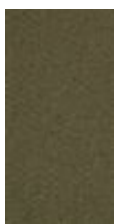
Tess. MESSENGER (Cat. C)



T86 CENERE



T87
CANAPA



T88
TORTORA



T89 ROSA
PASTELLO



T90
SENAPE



T91
TERRACOTTA



T92
SCARLATTO



T93
FORESTA



T94
OTTANIO



T95
PRUSSIA



T96
CARBONE



T97
ACCIAIO



T98 NERO