



Path

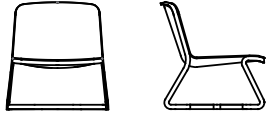
Arik Levy · 2017

The Path chair explores the world of optical illusions with an almost hypnotic layering of lines and surfaces to deliver balance and stability. Available in different nishes.



Available models

Lounge chair with base made of lacquered steel plate or in the Desalto exclusive finishes. Padded seat with internal frame made of rigid polyurethane. Seat cover in fabric category D, E or in leather or eco-leather.



Path

width 67 cm
depth 70 cm
total height 74 cm
seat height 39 cm

Finishing

Structure

Lacquers



B22
MARRONE
BUNGEE



B59 NERO
OPACO

Metals



A18
OSSIDIANA
OPACO



A02
OSSIDIANA
LUCIDO



A03
CROMO



A26 RAME
LUCIDO

Covering

Leather



M50
BIANCO



M52 TESTA
DI MORO



M53 NERO



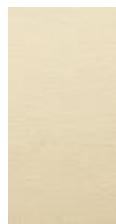
M55 ROSSO



M58
BORDEAUX



M59
SABBIA



M61 PANNA



M69
ZAFFERANO

Leather - NUVOLA



M73 NEVE



M74 BRUNO



M75 OASI



M76
TABACCO



M77 NERO



M78
CAMELIA



M79 KAKI



M80
BORDEAUX

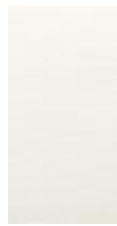


M81
ANTRACITE

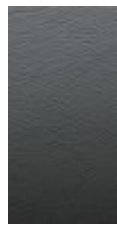
Eco Leather



Q13 CAFFE



R02
BIANCO



R06
ANTRACITE



R07 ECRU



R18 ROSSO



R19
AMARANTO

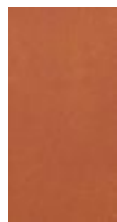


R29 NERO

Eco Leather- GRAIN



R45
SAHARA



R40
COGNAC



R41 FUMO



R42
TABACCO



R43
ARDESIA



R44
CARBONE

Eco Leather - GLOVE



R46 LATTE



R48 PIETRA



R49 PELTRO



R51 BISTRO



R52 MORO



R53 BRUNO



R54 CUIOIO



R55
CANNELLA



R56 OLIO



R57
GRANATA

Fabric - DANDY (Cat. A)



H65 CORDA



H66 ECRU



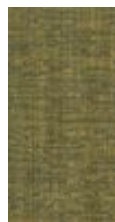
H67
TORTORA



H68
MELOGRANO



H69 TORBA



H70
PAGLIERINO



H71 GIADA



H72
TURCHESE



H73 DENIM



H74
ANTRACITE



H76 FANGO

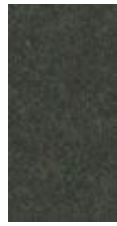


H75 FUMO

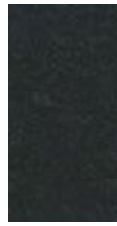
Fabric LODEN (Cat. A)



H77 IUTA



H78 MOCA



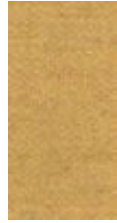
H79 PECE



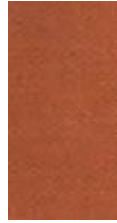
H80
GRANITO



H81 BRINA



H82
BANANA



H83
ARAGOSTA



H84
VERMIGLIO



H85 BOSCO



H86
PISTACCHIO



H87 CIANO



H88
INCHIOSTRO

Fabric SOFTY (Cat. B)



H27 GESSO



H28 CIPRIA



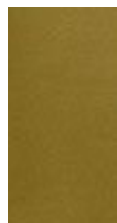
H29
MARSALA



H36
PAPAYA



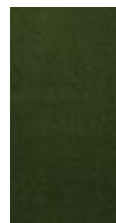
H37
NOCCIOLA



H38 CEDRO



H39
CILIEGIA



H46
MUSCHIO



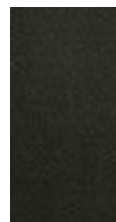
H47
PAVONE



H48
OCEANO



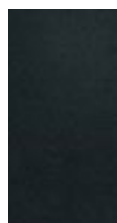
H49 VISIONE



H51 CAFFÈ



H52 TITANIO



H53
ARDESIA

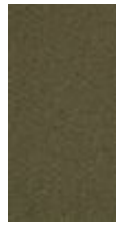
Fabric - MESSENGER (Cat. C)



T86 CENERE



T87
CANAPA



T88
TORTORA



T89 ROSA
PASTELLO



T90
SENAPE



T91
TERRACOTTA



T92
SCARLATTO



T93
FORESTA



T94
OTTANIO



T95
PRUSSIA



T96
CARBONE



T97
ACCIAIO



T98 NERO

