



Element

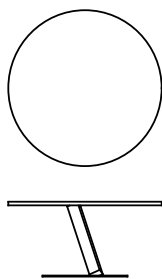
Tokujiin Yoshioka · 2013

An iconic table, Element is a symbol of purity and poetry, the essence of the visionary designer Tokujiin Yoshioka's style. The central support, delicately balanced between the two horizontal elements, defies gravity, suspended between earth and sky, between the past and the future.



Available models

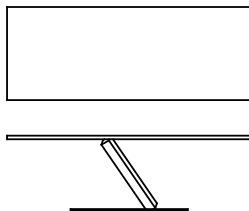
Disassembling table with steel frame, metal or MDF top, in lacquered or materic spread by hand finishings.



Element

height
72 cm

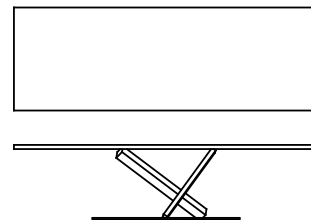
measures
Ø 140 cm
Ø 160 cm



Element

height
72 cm

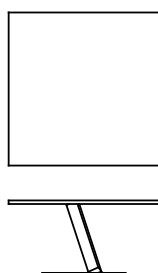
measures
200 x 99 cm
240 x 99 cm



Element

height
72 cm

measures
300 x 99 cm



Element

height
72 cm

measures
148 x 148 cm

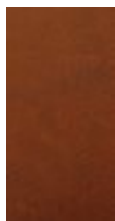
Finishing

Base

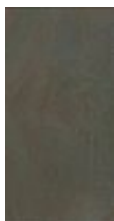
Handcraft finishes



A90 METAL
GREY



D60
MATTONE
RED
CONCRETE



A92 METAL
BRONZE



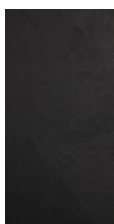
D62 COURT
GREY



D63 DUOMO
WHITE



D65 LUNA
GREY
CONCRETE



D66 BLACK
CONCRETE



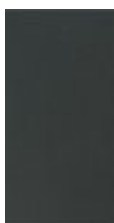
D61 WHITE
CONCRETE



D55 REALE
BLUE
CONCRETE



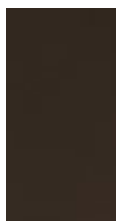
D57 OCRA
CONCRETE



D56
ARDESIA
CONCRETE



D58
GHIACCIO
CONCRETE



D59 CACAO
CONCRETE

Lacquers



A66
LACCATO
FERRO
GREZZO



B13
SABBIA



B22
MARRONE
BUNGEE



B59 NERO
OPACO



B62
BIANCO
OPACO



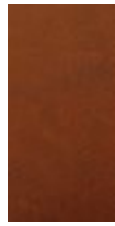
B70 ROSSO
LAMPONE

Top

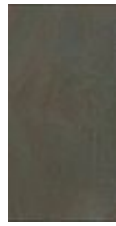
Handcraft finishes



A90 METAL
GREY



D60
MATTONE
RED
CONCRETE



A92 METAL
BRONZE



D62 COURT
GREY



D63 DUOMO
WHITE



D65 LUNA
GREY
CONCRETE



D66 BLACK
CONCRETE



D61 WHITE
CONCRETE



D55 REALE
BLUE
CONCRETE



D57 OCRA
CONCRETE



D56
ARDESIA
CONCRETE



D58
GHIACCIO
CONCRETE



D59 CACAO
CONCRETE

Lacquers



A66
LACCATO
FERRO
GREZZO



B13
SABBIA



B22
MARRONE
BUNGEE



B59 NERO
OPACO



B62
BIANCO
OPACO



B70 ROSSO
LAMPONE

