



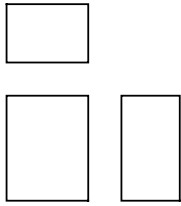
Unus

Elisa Ossino · 2014

The intrinsic materic character of the artisan finishes and the rigorous shape give this monolite an austere elegance. Perfect proportions to be an accessory seating or a useful side table.

Available models

Small table-seating in MDF covered with hand-spread resin.



Unus

width 25 cm
depth 35 cm
height 45 cm

Finishing

Structure

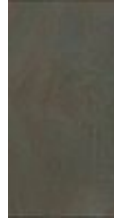
Handcraft finishes



A90 METAL
GREY



D60
MATTONE
RED
CONCRETE



A92 METAL
BRONZE



D62 COURT
GREY



D63 DUOMO
WHITE



D64 TUFO
STONE



D65 LUNA
GREY
CONCRETE



D66 BLACK
CONCRETE



D67 LAVA
STONE



D61 WHITE
CONCRETE



D55 REALE
BLUE
CONCRETE



D57 OCRA
CONCRETE



D56
ARDESIA
CONCRETE



D58
GHIACCIO
CONCRETE



D59 CACAO
CONCRETE

