



Sand Air - outdoor

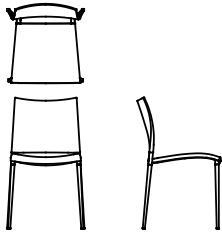
Pocci + Dondoli · 2003

Ultralight, comfortable and sophisticated mesh enhances the unique characteristics that have made the Sand design famous. The PVC-coated nylon mesh ensures excellent breathability.



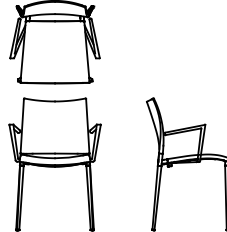
Available models

Stacking chair with or without armrests, die-cast aluminium frame. Seat and back in mesh made of polyester thread covered with PVC (Sand Air) and PVC + hemp (Sand Air Canatex / Duo).



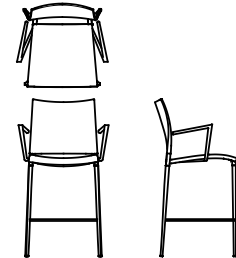
Sand air - chair

width 47 cm
depth 54 cm
total height 82 cm
seat height 45 cm



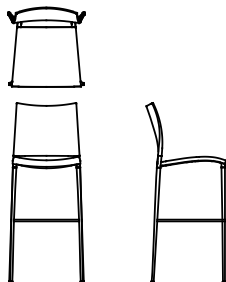
Sand air - chair with armrest

width 53,5 cm
depth 54 cm
total height 82 cm
seat height 45 cm



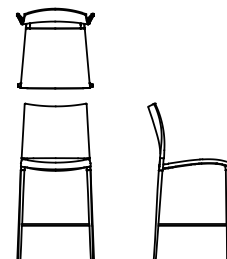
Sand air - low stool with armrest

width 53,5 cm
depth 54 cm
total height 99 cm
seat height 64 cm



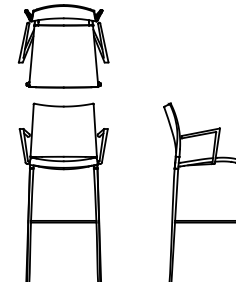
Sand air - high stool

width 47 cm
depth 54 cm
total height 115 cm
seat height 80 cm



Sand air - low stool

width 47 cm
depth 54 cm
total height 99 cm
seat height 64 cm



Sand air - high stool with armrest

width 53,5 cm
depth 54 cm
total height 115 cm
seat height 80 cm

Finishing

Frame

Lacquers



B13
SABBIA



B22
MARRONE
BUNGEE



B41
TORTORA



B42
GRAFITE



B59 NERO
OPACO



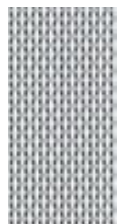
B62
BIANCO
OPACO

Seat

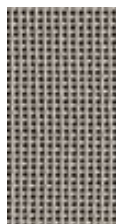
Net



S03
BIANCO



S07
MELANGE



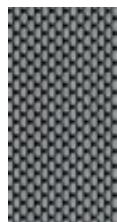
S21
CANATEX
TORTORA



S22
CANATEX
SABBIA



S24
CANATEX
NERO



S27 GRIGIO
PIOMBO



S28 GRIGIO
GHISA



S30
CANATEX
MARRONE
MEDIO